

AIR-MITE DEVICES, INC.



Air-Mite Devices, Inc.
4739 W. Montrose Ave.
Chicago, IL 60641
Phone: (773) 286-3393
Fax: (773) 286-4703
Email: airmite@mindspring.com

HOW TO ORDER

SAFETY PRODUCTS/SAFETY CONTROL SYSTEMS

PNEUMATIC SAFETY CONTROLS

BASIC CONTROLS

SC3000 - SELF CONTAINED 2 HAND CONTROL - STAND ALONE MODEL
SC3300 - SELF CONTAINED 2 HAND CONTROL - PRESS READY MODEL
SC3400 - SELF CONTAINED CONTROL W/RESET BUTTON - STAND ALONE
SC3500 - SELF CONTAINED CONTROL W/RESET BUTTON - PRESS READY
SC3800 - MODULAR 2 HAND CONTROL - STAND ALONE MODEL

ENHANCED CONTROLS

SC4000 - INCLUDES SC3400 + SC1111 (LOGIC MODULE) - STAND ALONE
OR PRESS READY
SC4500 - INCLUDES SC3400 + SC2222 (LOGIC MODULE + TIMER) - STAND ALONE
OR PRESS READY
SC4600 - INCLUDES SC3400 + SC2222 (LOGIC MODULE + INDICATOR LT)

ELECTRICAL SAFETY CONTROLS

BASIC CONTROLS

EPB3000 - SELF CONTAINED PUSH BUTTON CONTROL - SEVERAL VOLTAGES
EIR3000 - SELF CONTAINED INFRA - RED CONTROL - SEVERAL VOLTAGES
EFO3000 - SELF CONTAINED FIBER OPTIC CONTROL - SEVERAL VOLTAGES

ENHANCED CONTROLS

EPB3000 - 34 - SELF CONTAINED PUSH BUTTON CLAMP & HOLD WITH RESET
EIR3000 - 34 - SELF CONTAINED INFRA - RED CLAMP & HOLD WITH RESET
EFO3000 - 34 - SELF CONTAINED FIBER OPTIC CLAMP & HOLD WITH RESET

LOCKOUT VALVES

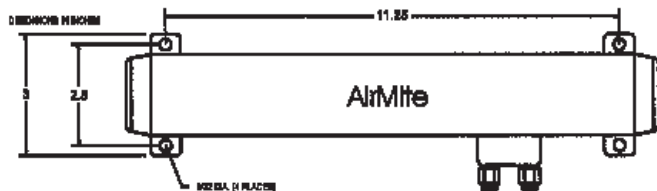
LV SERIES - LV3101 THRU LV3601 (1/8" NPT THRU 1" NPT)
V SERIES - V202 THRU V204

SAFETY FOOT GUARD

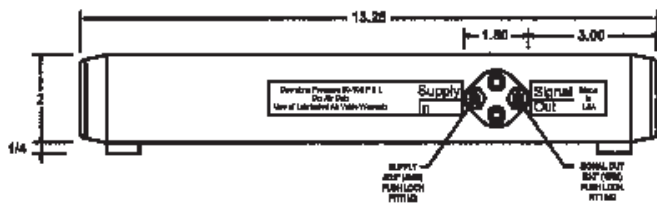
FG100



Model SC3000
STAND ALONE MODEL



Model SC3000 - Top View



Model SC3000 - Rear View

1/4" tube pushlock fittings optional - 9-1/2" OAL optional

Air-Mite SC3000 Series two hand safety controls.

The SC3000 provides versatility—with stand alone and press ready models—and economy in a compact package.

Pneumatic Two-Hand No-Tie Down Control. Buttons, logic and manifold assembled in single unit. 5/32 Pushlock fittings standard.

3-Way Output—standard

OAL—13-1/4"-std 9-1/2"-avail

Supply Pressure: 50-100 psi

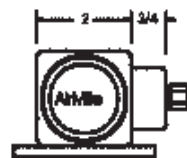
Filtration: 5 Micron

Lubrication: None allowed

Operating Force: 5 oz. (each button)

Button Diameter: 1-3/8"

Activating Window: within .3 seconds



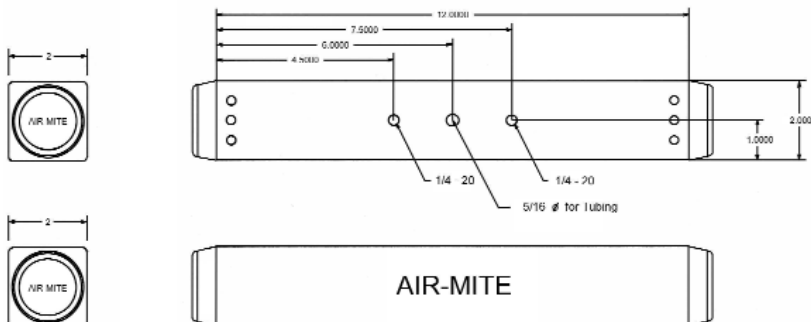
End View

Connect dry filtered air supply to Supply input port.

Output 1 tube gives signal out when both buttons are pressed and held.



Model SC3300
PRESS READY MODEL



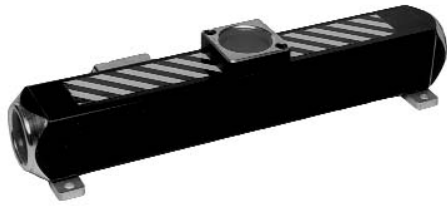
Air-Mite SC3000 Series two hand safety controls. Press Read Model.

The SC3300 attaches directly to the press base providing a clean and safe control system. As with the SC3000, the buttons and logic are provided in a completely self-contained unit.

Connect dry filtered air supply to Supply input port.

Output 1 tube gives signal out when both buttons are pressed and held.

Pressure range 50 - 100 psi.

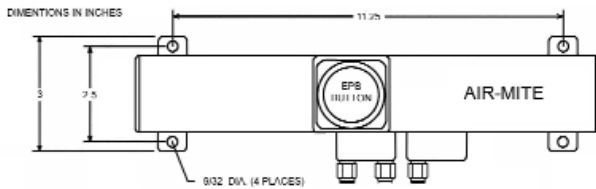


**Model SC3400
(Includes Reset Button)**

STAND ALONE MODEL

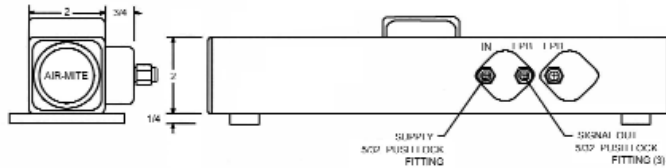
Ideal safety control for clamp and hold safety control systems.

Integrate with double pilot valves or logic modules for safe and secure machining applications.

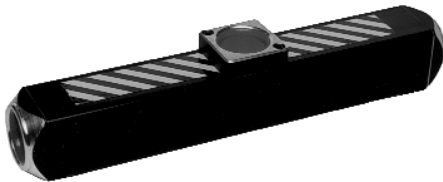


Connect dry, filtered air to **SUPPLY IN** port.

Two (2) **OUTPUT** ports attach to each end of double pilot valve or to single pilot valve and SC1111 or SC2222 module.

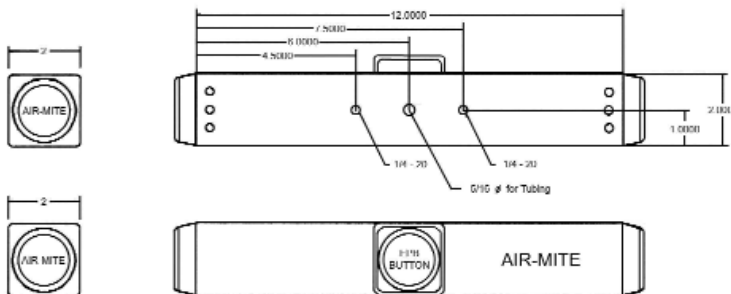


Pressure range 50 - 100 psi.



**Model SC3500
PRESS READY MODEL**

Same safety control as above but mounts directly to front of press base for a compact and efficient solution to clamp and hold circuits with Air-Mite press systems.



Connect dry filtered air supply to **Supply input port**.

Output 1 tube gives signal out when both buttons are pressed and held.

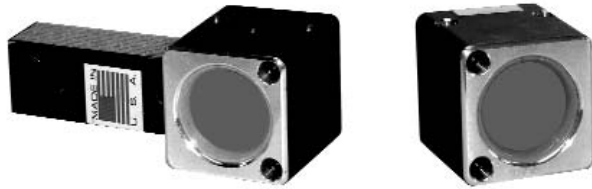
Output 2 tube gives signal out when EPB button is pressed.

Pressure range 50 - 100 psi.

Other Models:

- SC4000—includes SC3400 & logic module for clamp & hold circuit + MV2 limit valve
- SC4500—includes SC3400 & 1-30 sec timer for sequential & time dwelled circuits

MODULAR SAFETY CONTROLS

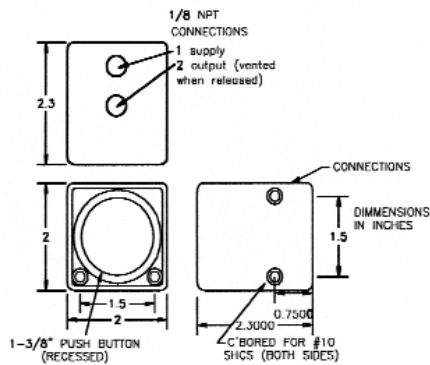


Model SC3800

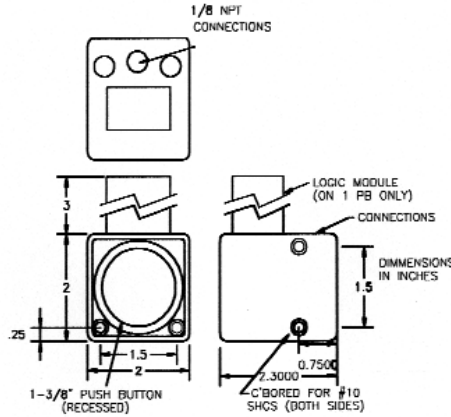
Modular two-piece safety control - vertical or horizontal mounted - allows greater spacing between palm buttons than the SC3000 control.

Small, compact logic module comes attached to one push button. Available with 1/8" npt.

Left Button



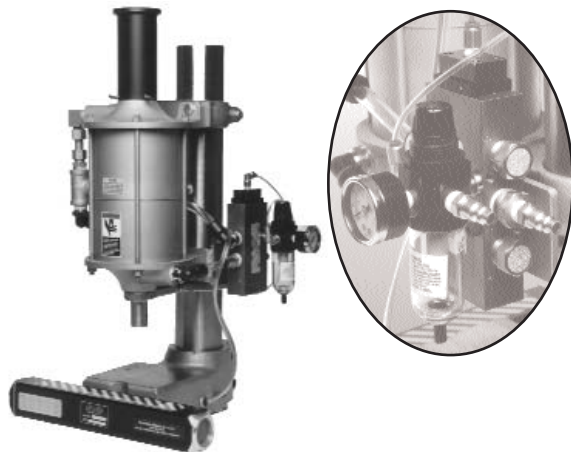
Right Button



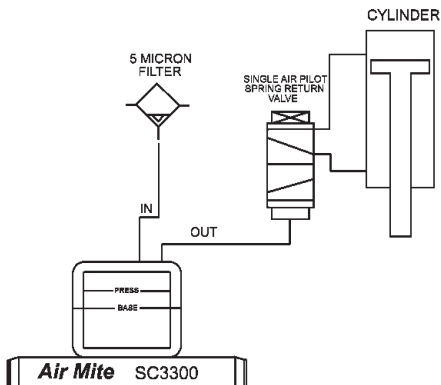
Mount the palm buttons using the 10-32 screws included. The buttons may be mounted vertically or horizontally. Mount the buttons 18 inches from any possible pinch point.

Connect air supply to #1 port on both palm buttons. Connect the #2 on the SC3800-001 to the port to the #3 port on the SC3800-002 the #4 port is the output port.

Pressure range 50 - 100 psi.



PIPING LAYOUT



Press with safety Control Systems

Air-Mite SC3300 Press Ready controls are specifically designed to flush mount with our custom machined press bases. The SC3300 provides a clean silhouette with tubing routed under the base. These controls combine all the features of our stand alone models plus a complete package of safety control, valve & bracket, and fittings for easy installation.

Air-Mite Pneumatic Safety Systems include a rugged Air-Mite Press - delivering a choice of eight power capacities - equipped with either a basic or enhanced safety system.

ORDERING INFORMATION

- (1) Select the appropriate press from those noted on catalog pages 4-5 - choose the complete model number & stroke
- (2) Place any press modifications - such as longer columns, machined rods, etc. - after press number between ()
- (3) Add "33" after brackets to signify SC3300 safety package - includes two-hand control, mtg bracket, power valve & fittings

NOTE: If no modifications, simply add -33 to complete press numbers

**Press ready versions of SC3400, SC4000 & SC4500 - furnished as needed

Press Ready Packages

Examples:

AP7-2" (3" extra column) -33 = AP7-2" stroke press with extra column & SC3300 control package

DAP38-2" (1-14" threaded rod)-33 = DAP38-2" stroke press with machined rod & SC3300 control package

DAP19DR-2"-33 - includes control package adder - no modifications

ELECTRIC INFRARED CONTROLS

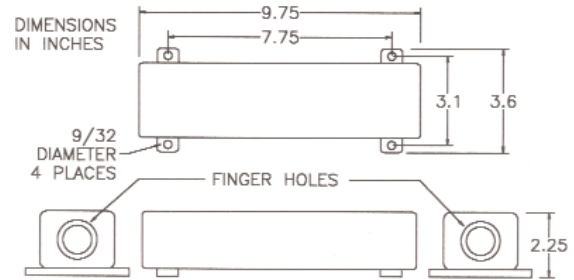


Model EIR3000

EIR3000-XX

WITH INFRARED ACTIVATORS.

GIVES A MAINTAINED OUTPUT SIGNAL WHEN BOTH LIGHT BEAMS ARE BROKEN WITHIN .3 SECONDS AND HELD.



OPTIONS ARE AVAILABLE, SOME ARE SHOWN BELOW. CALL YOUR DISTRIBUTOR OR AIR-MITE 773/ 286-3393 OR FAX 773/ 286-4703 FOR A COMPLETE LIST OR FOR HELP WITH SPECIFIC APPLICATIONS.

OPTIONS:

- 00 FURNISHED WITH 120v AC INPUT & OUTPUT
- 01 CONTACT OUTPUT SINK/SOURCE-REC FOR PC'S
- 02 120v AC INPUT/24v DC OUTPUT
- 03 24v DC INPUT/24v DC OUTPUT
- 04 CANCELABLE OUTPUT
- 05 PULSED OUTPUT/ 1.5 SECONDS
- 06 PULSED OUTPUT/ 1-30 SECONDS
- 07 ADDED CENTER RED BUTTON FOR ADDITIONAL SIGNAL WITH 6' CORD
- 08 DEEPSET 1/2" BUTTON GUARDS - 1/4" STANDARD
- 09 OPERATORS IN INDIVIDUAL BOXES - 5' CORD
- 10 CLAMP CIRCUITS - OPERATION SAME AS IN OUR PNEUMATIC CONTROL - BUILT-IN RESET BUTTON LIMIT SWITCH - NOT INCLUDED
- 11 SAME AS -10 BUT INCLUDES ADJUSTABLE TIMER IN CHOICE OF RANGES 0 to .999 SEC., TO 9.999 SEC., TO 99.9 SEC., TO 999.9 SEC.

ELECTRIC PUSH BUTTON CONTROLS

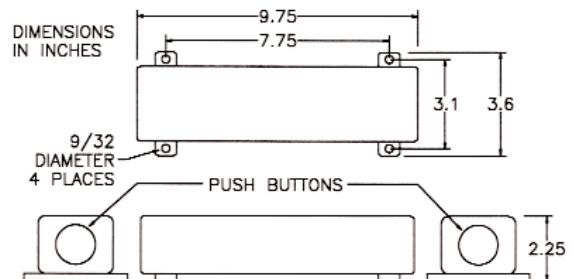


Model EPB3000

EPB3000-XX

WITH PUSH BUTTONS

GIVES A MAINTAINED OUTPUT SIGNAL WHEN BOTH BUTTONS ARE PRESSED WITHIN .3 SECONDS AND HELD.

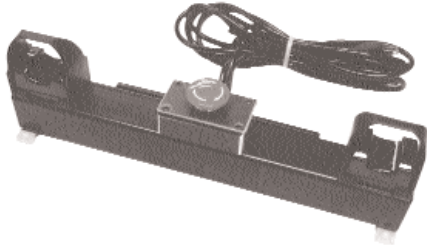


OPTIONS ARE AVAILABLE, SOME ARE SHOWN BELOW. CALL YOUR DISTRIBUTOR OR AIR-MITE 773/ 286-3393 OR FAX 773/ 286-4703 FOR A COMPLETE LIST OR FOR HELP WITH SPECIFIC APPLICATIONS.

OPTIONS:

- 00 FURNISHED WITH 120v AC INPUT & OUTPUT
- 01 CONTACT OUTPUT SINK/SOURCE-REC FOR PC'S
- 02 120v AC INPUT/24v DC OUTPUT
- 03 24v DC INPUT/24v DC OUTPUT
- 04 CANCELABLE OUTPUT
- 05 PULSED OUTPUT/ 1.5 SECONDS
- 06 PULSED OUTPUT/ 1-30 SECONDS
- 07 ADDED CENTER RED BUTTON FOR ADDITIONAL SIGNAL WITH 6' CORD
- 08 DEEPSET 1/2" BUTTON GUARDS - 1/4" STANDARD
- 09 OPERATORS IN INDIVIDUAL BOXES - 5' CORD
- 10 CLAMP CIRCUITS - OPERATION SAME AS IN OUR PNEUMATIC CONTROL - BUILT-IN RESET BUTTON LIMIT SWITCH - NOT INCLUDED
- 11 SAME AS -10 BUT INCLUDES ADJUSTABLE TIMER IN CHOICE OF RANGES 0 to .999 SEC., TO 9.999 SEC., TO 99.9 SEC., TO 999.9 SEC.

ELECTRIC FIBER OPTIC CONTROLS



Model EFO3000

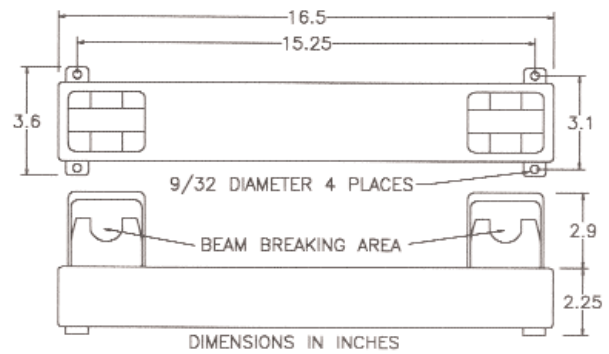
EFO3000-XX

WITH TOP MOUNTED FIBER OPTIC SENSORS.

GIVES A MAINTAINED OUTPUT SIGNAL WHEN BOTH LIGHT BEAMS ARE BROKEN WITHIN .3 SECONDS AND HELD.

OPTIONS:

- 00 FURNISHED WITH 120v AC INPUT & OUTPUT
- 01 CONTACT OUTPUT SINK/SOURCE-REC FOR PC'S
- 02 120v AC INPUT/24v DC OUTPUT
- 03 24v DC INPUT/24v DC OUTPUT
- 04 CANCELABLE OUTPUT
- 05 PULSED OUTPUT/ 1.5 SECONDS
- 06 PULSED OUTPUT/ 1-30 SECONDS
- 07 ADDED CENTER RED BUTTON FOR ADDITIONAL SIGNAL WITH 6' CORD
- 08 DEEPSSET 1/2" BUTTON GUARDS - 1/4" STANDARD
- 09 OPERATORS IN INDIVIDUAL BOXES - 5' CORD
- 10 CLAMP CIRCUITS - OPERATION SAME AS IN OUR PNEUMATIC CONTROL - BUILT-IN RESET BUTTON LIMIT SWITCH - NOT INCLUDED
- 11 SAME AS -10 BUT INCLUDES ADJUSTABLE TIMER IN CHOICE OF RANGES 0 to .999 SEC., TO 9.999 SEC., TO 99.9 SEC., TO 999.9 SEC.



OPTIONS ARE AVAILABLE, SOME ARE SHOWN BELOW. CALL YOUR DISTRIBUTOR OR AIR-MITE 773/ 286-3393 OR FAX 773/ 286-4703 FOR A COMPLETE LIST OR FOR HELP WITH SPECIFIC APPLICATIONS.

Press with Safety Control Systems

Air-Mite Electric Safety Systems include a sized Air-Mite Press with two hand safety controls in a choice of three actuator styles.

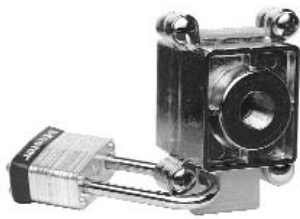
- EPB - Push Button
- EIR - Infra-Red
- EFO - Fiber Optic (non-contact)

Voltages (YY): Choice of four input-output voltage options:

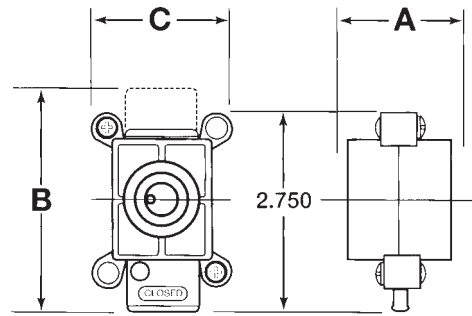
- 00 - 120 v input & output
- 01 - Sink/source option for PCs or controllers
- 02 - 120 v input & 24 v DC output
- 03 - 24 v DC input and output

Electric safety control systems are equipped with a sized Air-Mite press supplied with either a basic or enhanced safety system.





Materials and Specifications:
 Body: Nickel plated zinc
 Slide: Safety yellow, 15% Teflon, high-impact plastic
 Seals: Pre-lubricated Buna O-Rings
 Screws: Nickel plated steel
 Temperature Range: 40-150° F
 Pressure Range: 0-250 PSIG
 Exhaust Bleed at 100 PSI: 7 SCFM



LOCKOUT SLIDE VALVES 2 - WAY & 3 - WAY

Satisfies OSHA Standard 29 CFR 1910-Control Hazardous Energy Sources.

FEATURES

- Nickel plated housing ideal for medical, chemical & food
- Lock in OFF-EXHAUST position only (OSHA requirement)
- Slide of high impact plastic—safety yellow for quick identification
- Slide cannot be removed when valve is locked (OSHA requirement)
- High air flow—minimal pressure drop
- Controlled exhaust rate muffles noise and prevents rupture of pre-
 cise filter elements due to high back flow
- Supplied with Lock & Key - Specify Keyed Alike or Different

PORTS NPTF	MODEL NUMBER		AVG. CV.	DIMENSIONS			WT. OZ.
	2-way	3-way		A	B	C	
1/4"	V102	V202	2.7	1.7	3.1	1.92	6.5
3/8"	V103	V203	6.4	1.7	3.1	1.92	6.5
1/2"	V104	V204	6.4	1.7	3.1	1.92	6.5

Protects employees performing service, maintenance or repairs to equipment powered by pneumatic, hydraulic or electrical energy. OSHA regulation requires machines and equipment to be locked out from the energy source when service or maintenance is performed.

SAFETY LOCK OUT VALVES— LV3 SERIES

Models LV3101 1/8", LV3201 1/4", LV3301 3/8",
 LV3401 1/2", LV3601 3/4"



Valve will be locked in Normally Closed position to prevent accidental operation.

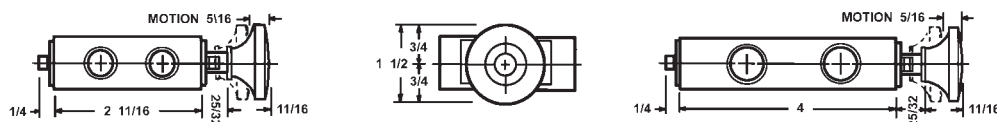
Satisfies OSHA Standard 29 CFR 1910-Control Hazardous Energy Sources.

Protects employees performing service, maintenance or repairs of equipment powered by pneumatic, hydraulic or electrical energy.

- Suitable for applications up to 150 psi air, 300 psi hydraulic
- Entry from right or left side
- Exhaust inlet same size for faster shutdown
- Supplied with lock & key—specify keyed alike or keyed different

FEATURES

- Anodized aluminum body
- Electroless nickel spools
- Teflon coated Buna N O-rings—Viton optional





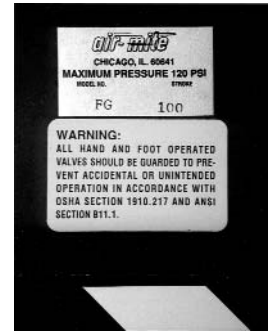
The Air-Mite Safety Foot Guard provides protection against accidental tripping of foot operated, spring, manual, or pilot return valves. It can be used with all foot operated valves—either 2-position or 3-position—and with all port sizes—1/8", 1/4", 3/8", & 1/2" npt.

- Shields & protects the valve body and actuator against damage
- Sturdy, heavy all-steel construction withstands daily abuse in regular factory use.
- May be bolted down for permanent type installations or moved about to various locations for convenient operation
- Adheres to OSHA Section 1910.217 & ANSI Section B11.1

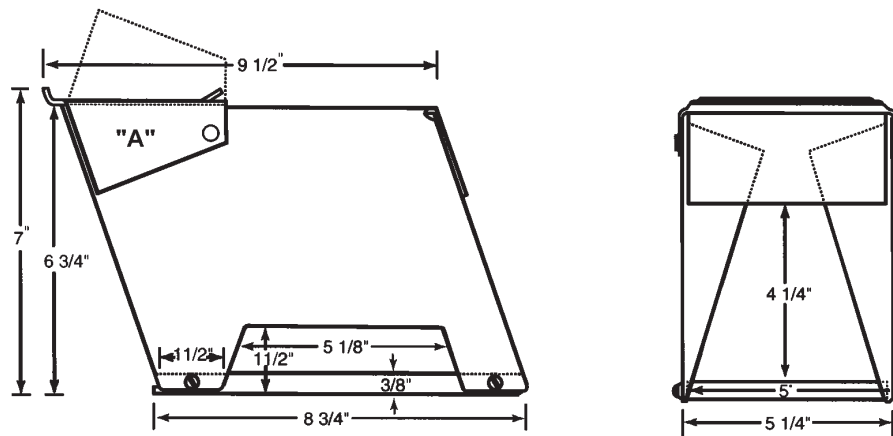
**MODEL FG 100
SAFETY FOOT GUARD**

Room for Large Steel Toed Shoes

Room for Timing Circuits & Side by Side Units



SAFETY FOOT GUARD LABEL



SIDE VIEW

REAR VIEW

* "A" – Flap articulates for easy entry.

**INSTALLATION INSTRUCTIONS
FOR SAFETY FOOT GUARD**

1. The bottom mounting plate of this safety foot guard has two pairs of tapped mounting holes.
 - (a) The smaller pair of holes - tapped 1/4-20 thread - are used for mounting any Air-Mite 1/8" or 1/4" NPT valve (i.e., any valves in V3100, V3200, V4100, V4200 series).
 - (b) The larger pair of holes - tapped with 5/16-24 thread - are used for mounting any Air-Mite 3/8" or 1/2" NPT valve (i.e., any valves in the V3300, V3400, V4300, V4400 series).
2. Rubber anti-skid bumpers denote bottom of the plate which should rest on the floor or other mounting base.
3. Should any operator not be adequately protected by the foot guard cover:
 - (1) Simply remove screws from the mounting holes, turn bottom mounting plate 180°, and reassemble, or
 - (2) Drill and tap new mounting holes in the bottom plate

