

AIR-MITE PNEUMATIC CYLINDERS

Air-Mite offers three main types of pneumatic cylinders- Tie Rod, Round Line, and Micro Cylinders. Our versatile cylinder product line can be used for a variety of applications. Custom cylinders are also available to fulfil specific needs. We regularly work with customers to design and develop new cylinders to meet their requirements.

All Air-Mite's cylinders proudly carry the "Made in USA" label. Cylinders have a durable, maintenance-free construction that assures uninterrupted service. We have a state of the art CNC machining facility in our factory in Round Lake, IL, where the components for each cylinder are precisely machined. Then, they are carefully assembled using high quality seals. Finally, each cylinder is cycled and inspected before shipment. All of this is done in a timely, efficient manner. Rush service is available to meet aggressive timelines.

TIE ROD CYLINDERS

Tie Rod Cylinders offer the greatest strength and power output with bore sizes from 1½" to 5". The 4" and 5" bore cylinders are available with double or triple piston configurations to provide double or triple the force in the same diameter cylinder. (Contact us for 1½" bore configurations)

Every cylinder manufactured by Air-Mite is completely rebuildable. Repair kits are available for all current and past models of cylinders.

FEATURES AND OPTIONS

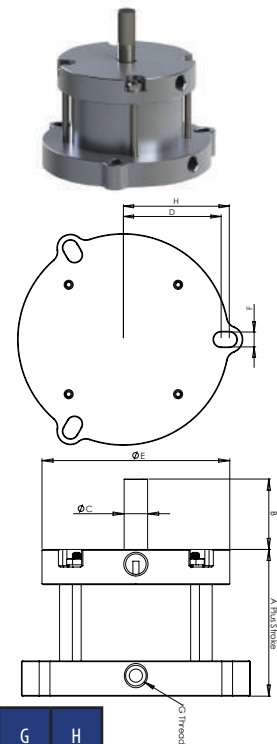
- 20-120 psi operating pressure
- CNC machined billet aluminum pistons, end caps, and compartments
- Bronze-filled PTFE piston wear strips
- Hardcoat anodized aluminum tubing (pre-lubed surface for extended life)
- Stainless steel tie rods to prevent corrosion
- Ground and polished steel rod (stainless steel and chrome optional)
- Plain rod ends standard (custom machining available)
- Nitrile U-cups and O-rings (FKM optional for high temperature applications)
- Self-lubricating bronze rod bearing
- Single-acting cylinder stroke lengths – up to 4" standard
- Double-acting cylinder stroke lengths – unlimited
- Double rod ends available on most cylinders

PLEASE NOTE: Air cylinders and air presses are required to be used with guards or anti tie-down controls as per OSHA regulations. This applies to all cylinders shown in this catalog

VS Single-Acting, Rear Flange Mount Tie Rod Cylinder

VS300 DR-2 N T4 W
1 2 3 4 5 6

- 1 cylinder size model number
- 2 blank=single rod
DR= double rod
- 3 stroke length in inches (4" max)
- 4 blank= standard rotatable rod
N= non-rotatable rod
- 5 blank= no rod threading
T2= external threaded rod
T3= reduced external threaded rod
T4= internal threaded rod
T5= other custom rod
- 6 blank= no wrench flats
W= wrench flats



Model	Bore Size	A	B	C	D	E	F	G	H
VS225	2.25	2.63	1.50	.50	1.88	3.25	.28	¼-18	2.00
VS300	3.00	2.63	1.50	.50	2.25	4.00	.34	¼-18	2.44
VS400	4.00	3.63	2.00	.75	3.00	5.25	.41	¾-18	3.00
VS500	5.00	3.63	2.00	1.00	3.50	6.25	.41	¾-18	3.50

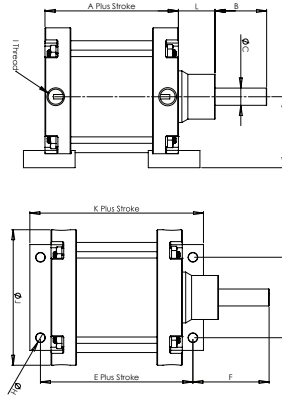
Strokes above 2" please consult factory for dimension A

Please call 224-338-0071 for current prices

PS Single-Acting, Foot Mount Tie Rod Cylinder

PS300 DR-2 N T4 W
1 2 3 4 5 6

- 1 cylinder size model number
- 2 blank= single rod
DR= double rod
- 3 stroke length in inches (4" max)
- 4 blank= standard rotatable rod
N= non-rotating rod
- 5 blank= no rod threading
T2= external threaded rod
T3= reduced external threaded rod
T4= internal threaded rod
T5= other custom rod
- 6 blank= no wrench flats
W= wrench flats

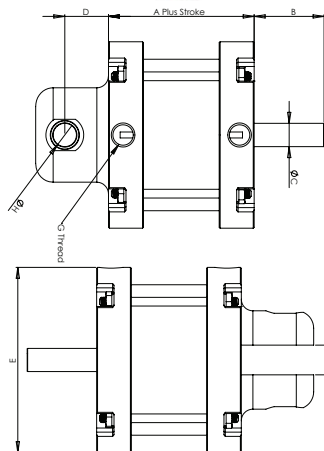


Model	Bore Size	A	B	C	D	E	F	G	H	I	J	K	L
PS225	2.25	1.88	1.50	.50	1.69	2.50	2.25	2.38	.27	¼-18	3.25	3.13	1.06
PS300	3.00	1.88	1.50	.50	2.06	2.50	2.25	2.38	.27	¼-18	4.00	3.13	1.06
PS400	4.00	2.13	2.00	.75	2.75	3.13	3.00	3.38	.39	¾-18	5.25	4.13	1.50
PS500	5.00	2.13	2.00	1.00	3.31	3.13	3.00	3.38	.39	¾-18	6.25	4.13	1.50

CS Single-Acting, Clevis Mount Tie Rod Cylinder

CS300-2 N T4 W
1 2 3 4 5

- 1 cylinder size model number
- 2 stroke length in inches (4" max)
- 3 blank= standard rotatable rod
N= non-rotating rod
- 4 blank= no rod threading
T2= external threaded rod
T3= reduced external threaded rod
T4= internal threaded rod
T5= other custom rod
- 5 blank= no wrench flats
W= wrench flats



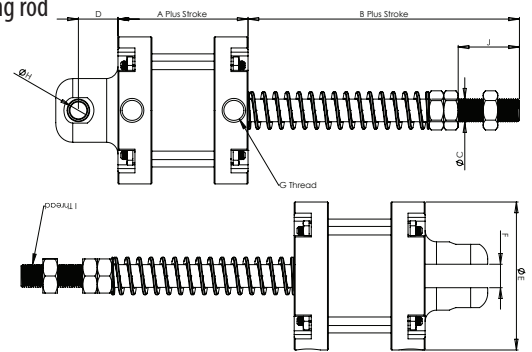
Model	Bore Size	A	B	C	D	E	F	G	H
CS225	2.25	2.63	1.50	.50	.88	3.25	.52	¼-18	.38
CS300	3.00	2.63	1.50	.50	.94	4.00	.64	¼-18	.50
CS400	4.00	3.63	2.00	.75	1.25	5.25	.78	¾-18	.63
CS500	5.00	3.63	2.00	1.00	1.25	6.25	1.00	¾-18	.75

Strokes above 2" please consult factory for dimension A

CPS Single-Acting, Clevis Mount Tie Rod Cylinder Pull Type- Normally Extended

CPS300-2 N
1 2 3

- 1 cylinder size model number
- 2 stroke length in inches (4" max)
- 3 blank= standard rotatable rod
N= non-rotating rod



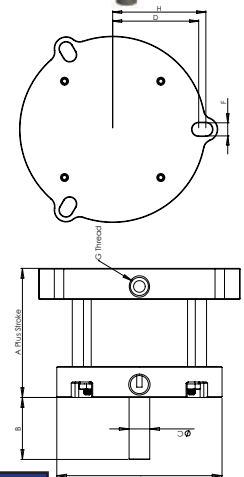
Model	Bore Size	A	B	C	D	E	F	G	H	I	J
CPS225	2.25	1.88	5.00	.50	.88	3.25	.52	¼-18	.38	½-20	1.25
CPS300	3.00	1.88	5.00	.50	.94	4.00	.64	¼-18	.50	½-20	1.25
CPS400	4.00	2.13	5.00	.75	1.25	5.25	.78	¾-18	.63	¾-16	1.25
CPS500	5.00	2.13	5.00	1.00	1.25	6.25	1.00	¾-18	.75	1-14	1.25

Strokes above 2" please consult factory for dimension A

VFS Single-Acting, Front Flange Mount Tie Rod Cylinder

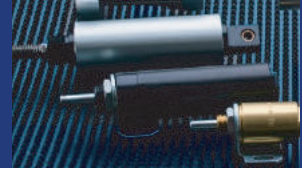
VFS300 DR-2 N T4 W
1 2 3 4 5 6

- 1 cylinder size model number
- 2 blank= single rod
DR= double rod
- 3 stroke length in inches (4" max)
- 4 blank= standard rotatable rod
N= non-rotating rod
- 5 blank= no rod threading
T2= external threaded rod
T3= reduced external threaded rod
T4= internal threaded rod
T5= other custom rod
- 6 blank= no wrench flats
W= wrench flats



Model	Bore Size	A	B	C	D	E	F	G
VFS225	2.25	2.63	1.50	.50	2.00	3.25	.28	¼-18
VFS300	3.00	2.63	1.50	.50	2.44	4.00	.34	¼-18
VFS400	4.00	3.63	2.00	.75	3.00	5.25	.41	¾-18
VFS500	5.00	3.63	2.00	1.00	3.50	6.25	.41	¾-18

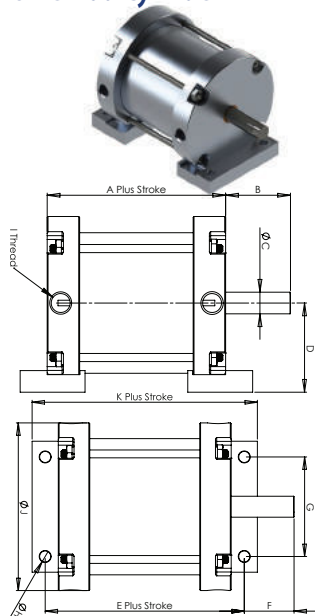
Strokes above 2" please consult factory for dimension A



DPS Double-Acting, Foot Mount Tie Rod Cylinder

DPS300 DR-2 N T4 W
1 2 3 4 5 6

- 1 cylinder size model number
- 2 blank=single rod
DR= double rod
- 3 stroke length in inches
- 4 blank= standard rotatable rod
N= non-rotating rod
- 5 blank= no rod threading
T2= external threaded rod
T3= reduced external threaded rod
T4= internal threaded rod
T5= other custom rod
- 6 blank= no wrench flats
W= wrench flats

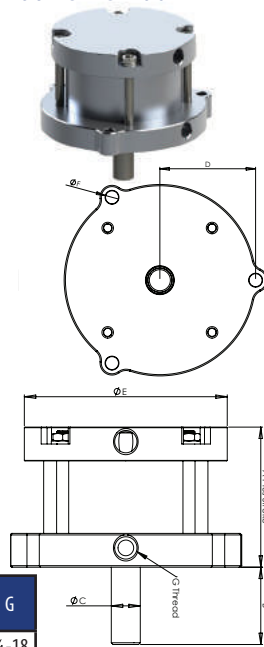


Model	Bore Size	A	B	C	D	E	F	G	H	I	J	K
DPS225	2.25	2.13	1.50	.50	1.69	2.75	1.19	2.38	.27	¼-18	3.25	3.38
DPS300	3.00	2.13	1.50	.50	2.06	2.75	1.19	2.38	.27	¼-18	4.00	3.38
DPS400	4.00	2.63	2.00	.75	2.75	3.63	1.50	3.38	.39	⅜-18	5.25	4.63
DPS450	4.00	4.00	2.00	.75	2.75	5.00	1.50	3.38	.39	⅜-18	5.25	6.00
DPS500	5.00	2.63	2.00	1.00	3.31	3.63	1.50	3.38	.39	⅜-18	6.25	4.63
DPS550	5.00	4.02	2.00	1.00	3.31	5.02	1.50	3.38	.39	⅜-18	6.25	6.02
DPS580	5.00	5.41	2.00	1.00	3.31	6.41	1.50	3.38	.39	⅜-18	6.25	7.41

DVFS Double-Acting, Front Flange Mount Tie Rod

DVFS300 DR-2 N T4 W
1 2 3 4 5 6

- 1 cylinder size model number
- 2 blank=single rod
DR= double rod
- 3 stroke length in inches
- 4 blank= standard rotatable rod
N= non-rotating rod
- 5 blank= no rod threading
T2= external threaded rod
T3= reduced external threaded rod
T4= internal threaded rod
T5= other custom rod
- 6 blank= no wrench flats
W= wrench flats

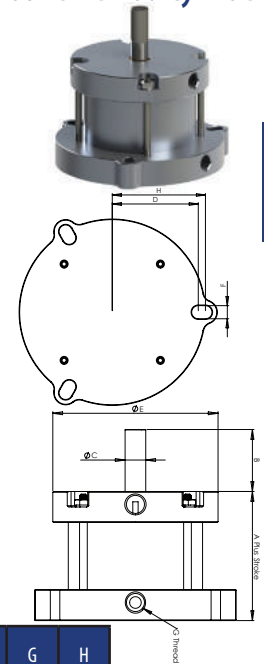


Model	Bore Size	A	B	C	D	E	F	G
DVFS225	2.25	2.13	1.50	.50	2.00	3.25	.28	¼-18
DVFS300	3.00	2.13	1.50	.50	2.44	4.00	.34	¼-18
DVFS400	4.00	2.63	2.00	.75	3.00	5.25	.41	⅜-18
DVFS450	4.00	4.00	2.00	.75	3.00	5.25	.41	⅜-18
DVFS500	5.00	2.63	2.00	1.00	3.50	6.25	.41	⅜-18
DVFS550	5.00	4.02	2.00	1.00	3.50	6.25	.41	⅜-18
DVFS580	5.00	5.41	2.00	1.00	3.50	6.25	.41	⅜-18

DVS Double-Acting, Rear Flange Mount Tie Rod Cylinder

DVS300 DR-2 N T4 W
1 2 3 4 5 6

- 1 cylinder size model number
- 2 blank=single rod
DR= double rod
- 3 stroke length in inches
- 4 blank= standard rotatable rod
N= non-rotating rod
- 5 blank= no rod threading
T2= external threaded rod
T3= reduced external threaded rod
T4= internal threaded rod
T5= other custom rod
- 6 blank= no wrench flats
W= wrench flats

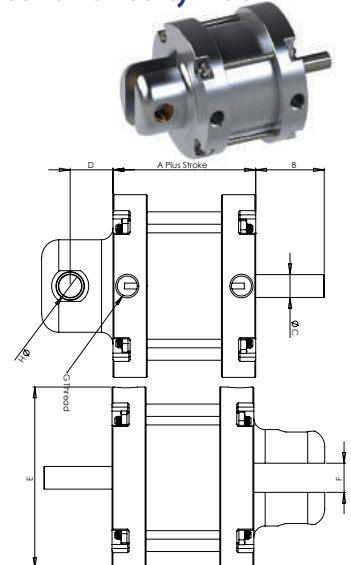


Model	Bore Size	A	B	C	D	E	F	G	H
DVS225	2.25	2.13	1.50	.50	1.88	3.25	.28	¼-18	2.00
DVS300	3.00	2.13	1.50	.50	2.25	4.00	.34	¼-18	2.44
DVS400	4.00	2.63	2.00	.75	3.00	5.25	.41	⅜-18	3.00
DVS450	4.00	4.00	2.00	.75	3.00	5.25	.41	⅜-18	3.00
DVS500	5.00	2.63	2.00	1.00	3.50	6.25	.41	⅜-18	3.50
DVS550	5.00	4.02	2.00	1.00	3.50	6.25	.41	⅜-18	3.50
DVS580	5.00	5.41	2.00	1.00	3.50	6.25	.41	⅜-18	3.50

DCS Double-Acting, Clevis Mount Tie Rod Cylinder

DCS300-2 N T4 W
1 2 3 4 5

- 1 cylinder size model number
- 2 stroke length in inches
- 3 blank= standard rotatable rod
N= non-rotating rod
- 4 blank= no rod threading
T2= external threaded rod
T3= reduced external threaded rod
T4= internal threaded rod
T5= other custom rod
- 5 blank= no wrench flats
W= wrench flats



Model	Bore Size	A	B	C	D	E	F	G	H
DCS225	2.25	2.13	1.50	.50	.88	3.25	.52	¼-18	.38
DCS300	3.00	2.13	1.50	.50	.94	4.00	.64	¼-18	.50
DCS400	4.00	2.63	2.00	.75	1.25	5.25	.78	⅜-18	.63
DCS450	4.00	4.00	2.00	.75	1.25	5.25	.78	⅜-18	.63
DCS500	5.00	2.63	2.00	1.00	1.25	6.25	1.00	⅜-18	.75
DCS550	5.00	4.02	2.00	1.00	1.25	6.25	1.00	⅜-18	.75
DCS580	5.00	5.41	2.00	1.00	1.25	6.25	1.00	⅜-18	.75

MICRO CYLINDERS

Micro Cylinders are our smallest line of cylinders with bore sizes from 3/4" to 1 1/4". Single and double acting models provide ample power for many applications such as clamping, locking, ejecting, and throttling.

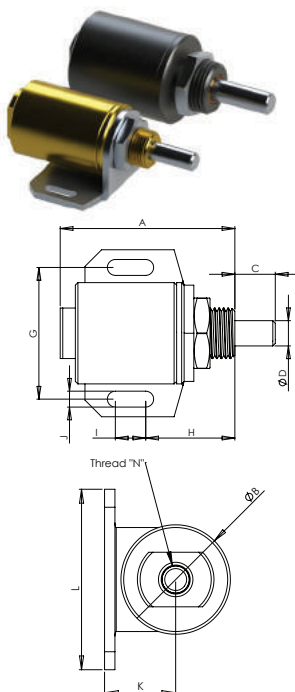
FEATURES AND OPTIONS

- 10-150 psi operating pressure
- CNC machined cylinder bodies, tubes, and end caps
- Zinc plated steel piston rod assemblies
- Plain rod ends standard (custom machining available)
- Nitrile U-cups and O-rings (FKM optional for high temperature applications)
- V and DAV model Micro Cylinders are nose mount only
- P and DAP model Micro Cylinders include steel foot mounting bracket
- Includes zinc plated steel jam nut for mounting

Micro Cylinder, Single-Acting Foot and Nose Mount

P 100-1-T2
1 2 3 4

- 1 P= foot mount
- V= nose mount
- 2 75= 3/4" bore
- 100= 1" bore
- 110= 1 1/8" bore
- 125= 1 1/4" bore
- 3 stroke length in inches
- 4 blank= no rod threading
- T2= external threaded rod
- T3= reduced external threaded rod
- T4= internal threaded rod
- T5= other custom rod

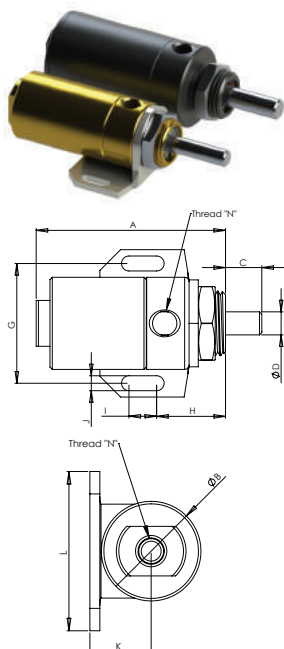


Foot Mount	Nose Mount	Stroke	A	B	C	D	E	F	G	H	I	J	K	L	M
P75-1/2	V75-1/2	.50	2.12	.88	.75	.25	.38	.50	1.25	.88	.00	.20	.68	1.63	1/8-27
P75-1	V75-1	1.00	2.62	.88	.75	.25	.38	.50	1.25	.88	.00	.20	.68	1.63	1/8-27
P75-2	V75-2	2.00	4.12	.88	.75	.25	.38	.50	1.25	.88	.00	.20	.68	1.63	1/8-27
P75-3	V75-3	3.00	5.12	.88	.75	.25	.38	.50	1.25	.88	.00	.20	.68	1.63	1/8-27
P100	V100	.63	2.16	1.25	.50	.31	.63	.63	1.63	1.10	.38	.20	.81	2.06	1/8-27
P100AC	V100AC	.63	1.88	1.25	.38	.31	.38	.63	1.63	1.10	.38	.20	.81	2.06	1/4-18
P100-1	V100-1	1.00	2.53	1.25	.75	.31	.63	.63	1.63	1.10	.38	.20	.81	2.06	1/8-27
P100-2	V100-2	2.00	4.47	1.25	1.00	.31	.63	.63	1.63	1.10	.38	.20	.81	2.06	1/8-27
P100-3	V100-3	3.00	5.47	1.25	1.00	.31	.63	.63	1.63	1.10	.38	.20	.81	2.06	1/8-27
P110-1	V110-1	1.00	2.53	1.31	.75	.31	.63	.63	1.63	1.10	.38	.20	.81	2.06	1/8-27
P120-1	V120-1	2.00	4.47	1.31	1.00	.31	.63	.63	1.63	1.10	.38	.20	.81	2.06	1/8-27
P130-1	V130-1	3.00	5.47	1.31	1.00	.31	.63	.63	1.63	1.10	.38	.20	.81	2.06	1/8-27
P125-1/2	V125-1/2	.50	2.04	1.50	1.00	.38	.63	.88	1.63	1.13	.00	.20	.91	2.00	1/8-27
P125-1	V125-1	1.00	2.54	1.50	1.00	.38	.63	.88	1.63	1.13	.00	.20	.91	2.00	1/8-27

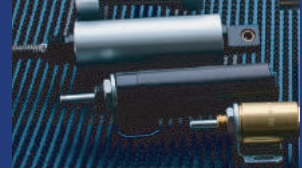
Micro Cylinder, Double-Acting Foot and Nose Mount

DAP 100-1-T2
1 2 3 4

- 1 P= foot mount
- V= nose mount
- 2 75= 3/4" bore
- 100= 1" bore
- 110= 1 1/8" bore
- 125= 1 1/4" bore
- 3 stroke length in inches
- 4 blank= no rod threading
- T2= external threaded rod
- T3= reduced external threaded rod
- T4= internal threaded rod
- T5= other custom rod



Foot Mount	Nose Mount	Stroke	A	B	C	D	E	F	G	H	I	J	K	L	M
DAP75-1/2	DAV75-1/2	.50	2.38	.88	.75	.25	.44	.50	1.25	.94	.00	.20	.68	1.63	1/8-27
DAP75-1	DAV75-1	1.00	2.88	.88	.75	.25	.44	.50	1.25	.94	.00	.20	.68	1.63	1/8-27
DAP75-2	DAV75-2	2.00	3.88	.88	.75	.25	.44	.50	1.25	.94	.00	.20	.68	1.63	1/8-27
DAP75-3	DAV75-3	3.00	4.88	.88	.75	.25	.44	.50	1.25	.94	.00	.20	.68	1.63	1/8-27
DAP75-4	DAV75-4	4.00	5.88	.88	.75	.25	.44	.50	1.25	.94	.00	.20	.68	1.63	1/8-27
DAP100-1/2	DAV100-1/2	.50	2.57	1.25	.50	.31	.50	.88	1.63	.94	.38	.20	.77	2.00	1/8-27
DAP100-1	DAV100-1	1.00	3.14	1.25	1.12	.31	.50	.88	1.63	.94	.38	.20	.77	2.00	1/8-27
DAP100-2	DAV100-2	2.00	4.26	1.25	1.12	.31	.50	.88	1.63	.94	.38	.20	.77	2.00	1/8-27
DAP100-3	DAV100-3	3.00	5.26	1.25	1.12	.31	.50	.88	1.63	.94	.38	.20	.77	2.00	1/8-27
DAP100-4	DAV100-4	4.00	6.26	1.25	1.12	.31	.50	.88	1.63	.94	.38	.20	.77	2.00	1/8-27
DAP100-5	DAV100-5	5.00	7.26	1.25	1.12	.31	.50	.88	1.63	.94	.38	.20	.77	2.00	1/8-27
DAP100-6	DAV100-6	6.00	8.26	1.25	1.12	.31	.50	.88	1.63	.94	.38	.20	.77	2.00	1/8-27
DAP125-1	DAV125-1	1.00	3.53	1.50	1.00	.38	.63	.88	1.63	1.13	.00	.20	.91	2.00	1/8-27
DAP125-2	DAV125-2	2.00	4.53	1.50	1.00	.38	.63	.88	1.63	1.13	.00	.20	.91	2.00	1/8-27
DAP125-3	DAV125-3	3.00	5.53	1.50	1.00	.38	.63	.88	1.63	1.13	.00	.20	.91	2.00	1/8-27



ROUND LINE CYLINDERS

Round Line Cylinders offer space saving design for many types of equipment and machinery. Air-Mite Round Line Cylinders are interchangeable with round line cylinders from other manufacturers. They are available in bore sizes from 1½" to 4".

FEATURES AND OPTIONS

- 20-150 psi operating pressure
- Double-acting cylinders (single-acting available as special)
- CNC machined billet aluminum pistons and end caps
- Black anodized end caps
- Hardcoat anodized aluminum tubing (pre-lubed surface for extended life)
- Ground and polished steel rod (stainless steel and chrome optional)
- Threaded rod end with wrench flats (custom machining available)
- Nitrile U-cups and O-rings (FKM optional for high temperature applications)
- Tough, low-friction polymer rod bearing
- Double rod ends available on all cylinders
- Removal of rear tang optional

Round Line Cylinder

DRS $\frac{20-1}{1 \ 2}$

1 10=1½" bore

15=1½" bore

20=2" bore

25=2½" bore

30=3" bore

40=4" bore

2 stroke length in inches



Model	Bore Size	A	B	C	D	E	F	G	H	I	J	K	L	M
DRS10	1.13	4.37	2.06	1.00	.69	.63	1.00	1.38	.75	.38	.25	¾-16	¾-16	½-27
DRS15	1.50	5.81	2.63	1.24	.82	.87	1.49	1.75	1.06	.50	.31	1-14	½-13	¼-18
DRS20	2.00	5.85	2.63	1.24	.86	.87	1.49	2.25	1.06	.63	.31	1-14	¾-11	¼-18
DRS25	2.50	6.94	2.88	2.00	1.38	1.00	1.68	2.75	1.37	.75	.44	1¾-12	¾-10	¾-18
DRS30	3.00	6.94	2.88	2.00	1.38	1.00	1.68	3.25	1.37	.75	.44	1¾-12	¾-10	¾-18
DRS40	4.00	10.69	5.88	2.19	1.44	1.13	2.25	4.25	1.75	1.00	.50	1¾-12	1-14	½-14

